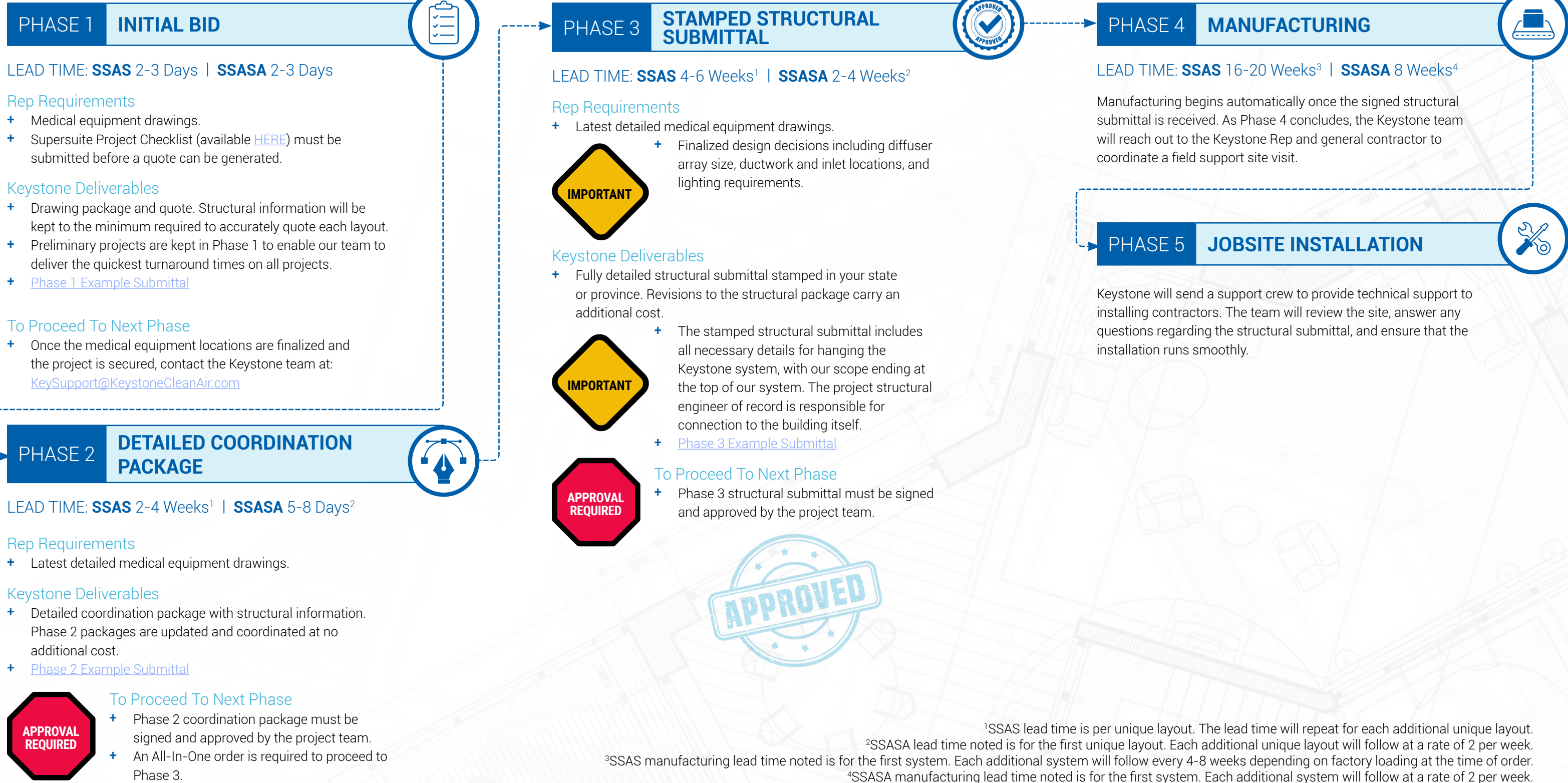


# PROJECT BLUEPRINT

Supersuite +Structure projects are complex and require coordination to run smoothly. All structural projects will follow 5 phases.

**SSAS** – Supersuite with Welded Structural Steel for Hybrid Operating Rooms and Imaging Suites

**SSASA** – Supersuite with Modular Aluminum Structure for Traditional Operating Rooms



<sup>1</sup>SSAS lead time is per unique layout. The lead time will repeat for each additional unique layout.  
<sup>2</sup>SSASA lead time noted is for the first unique layout. Each additional unique layout will follow at a rate of 2 per week.  
<sup>3</sup>SSAS manufacturing lead time noted is for the first system. Each additional system will follow every 4-8 weeks depending on factory loading at the time of order.  
<sup>4</sup>SSASA manufacturing lead time noted is for the first system. Each additional system will follow at a rate of 2 per week.