

# KROWN

## FAN FILTER UNIT WITH BENCHTOP REPLACEABLE FILTER

### FEATURES:

- THE MOST ENERGY EFFICIENT LINE OF FAN FILTER UNITS (FAN FILTER MODULES) ON THE MARKET TODAY, USING 15-50% LESS ENERGY THAN COMPARABLE PRODUCTS
- PROVIDES HIGH VOLUMES OF HEPA FILTERED AIRFLOW (FOR 99.99% REMOVAL OF CONTAMINANTS) AT LOW SOUND LEVELS
- VERSATILE CONSTRUCTION OPTIONS TO SUIT ANY APPLICATION
  - ROOM-SIDE (RSR) OR BENCH-TOP (BTR) REPLACEABLE FILTER
  - SUPPLY OR EXHAUST FLOW (AVAILABLE ON RSR ONLY) CONFIGURATIONS IN A VARIETY OF MODULE SIZES
  - FACTORY PROGRAMMED EC MOTOR
- QUICK AND EASY INSTALLATION



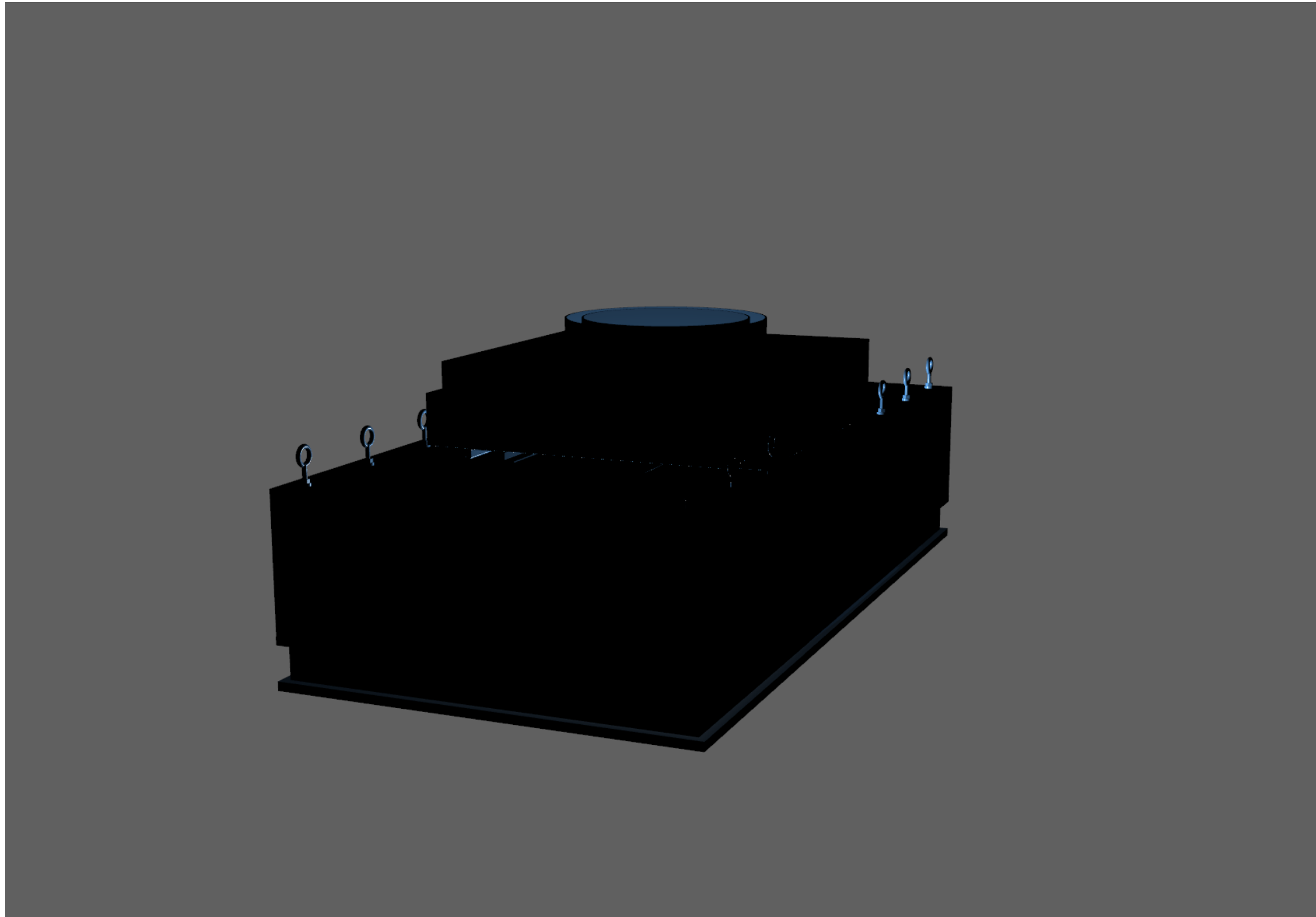
PROJECT:

274233

Revision: 0

03-22-2022

**FAN FILTER UNIT WITH BENCHTOP REPLACEABLE FILTER**  
**3D INTERACTIVE MODELS**



**PRODUCT CONFIGURATIONS**  
(CLICK BUTTONS TO TOGGLE VIEWS)

- USE THE SCROLL WHEEL TO ZOOM
- HOLD DOWN THE LEFT MOUSE BUTTON TO ROTATE
- HOLD DOWN CTRL AND LEFT MOUSE BUTTON TO MOVE



PROJECT:

274233

Revision: 0

03-22-2022



# KROWN

## FAN FILTER UNIT WITH BENCHTOP REPLACEABLE FILTER CONSTRUCTION DETAILS AND OPTIONS - SUPPLY

### STANDARD CONSTRUCTION

- GALVANIZED STEEL CONTROL BOX WITH DISCONNECT SWITCH
- ALUMINUM PLENUM CONSTRUCTION
- FACTORY INSTALLED LATCHES ON PLENUM FOR TOOL FREE FILTER INSTALLATION/REPLACEMENT (IN FIELD BY OTHERS)
- TOPSIDE MOTOR/BLOWER ACCESS
- BENCHTOP REMOVABLE FILTER, PACKAGED SEPARATELY FOR JOBSITE INSTALLATION BY OTHERS
- EXTRUDED ALUMINUM FILTER FRAME WITH URETHANE GEL
- WALKABLE PLENUM (250 LBS)
- STATIC PRESSURE AND AEROSOL SAMPLE PORT
- LAY IN CEILING INSTALLATION ONLY. FOR SURFACE MOUNT INSTALLATION ORDER SEPARATE APEX MOUNTING FRAME. SEE APEX SUBMITTAL (274236)
- SQUARE INLET COLLAR
- WASHABLE PRE-FILTER (NON-DUCTED UNITS)

### PLENUM FINISH

- WASHED MILL ALUMINUM
- B12 STANDARD WHITE

### INLET SIZES

- NONE (UNDUCTED)
- 10" ROUND
- 12" ROUND
- 14" ROUND

### FILTER

- HEPA - 2" - IEST RP CC001 TYPE J
- ULPA - 2" - IEST RP CC001 TYPE F

### FAN POWER VOLTAGE

- 115V
- 208V
- 240V
- 277V

### MOTOR

- PSC MOTOR, 60Hz, 1 PHASE
- EC MOTOR, 50/60 Hz, 1 PHASE

### WHEEL

- FORWARD CURVED
- BACKWARD CURVED

### FAN CONTROLLER

- PSC MOTOR STANDARD UNIVERSAL SPEED CONTROLLER
- EC MOTOR STANDARD SPEED CONTROLLER
- BACnet FLOW CONTROLLER. MOTOR AND FILTER STATUS OVER BACnet. SEE BFC MANUAL FOR DETAILS. (EC MOTOR ONLY)

### FILTER AND MOTOR STATUS LIGHTS

- TRI-COLOR FACE MOUNTED LED FILTER AND MOTOR STATUS LIGHT
- EC MOTOR LED INTEGRATES WITH BACnet, PSC MOTOR LED INCLUDES 6" TALL CONTROL BOX

### MOTOR PROGRAM

- CONSTANT FLOW
- CONSTANT TORQUE

### OPTIONS

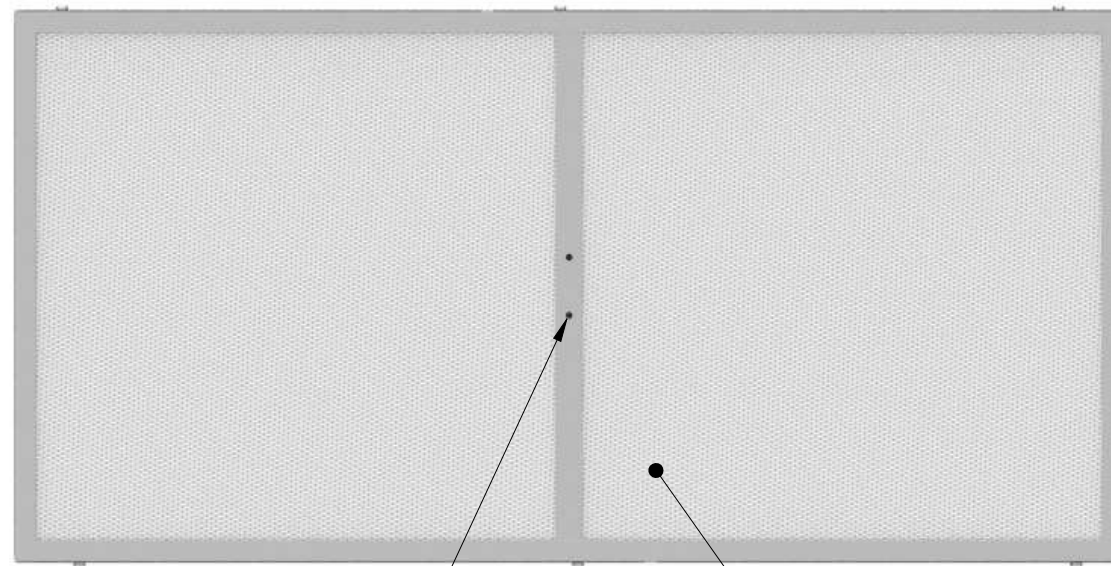
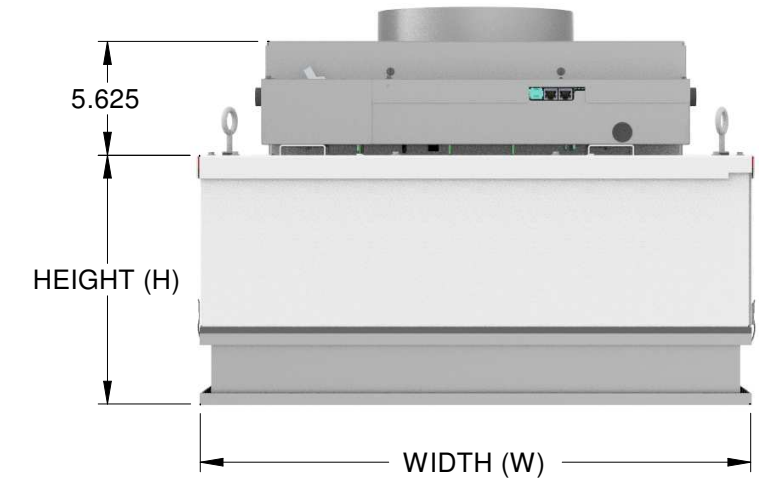
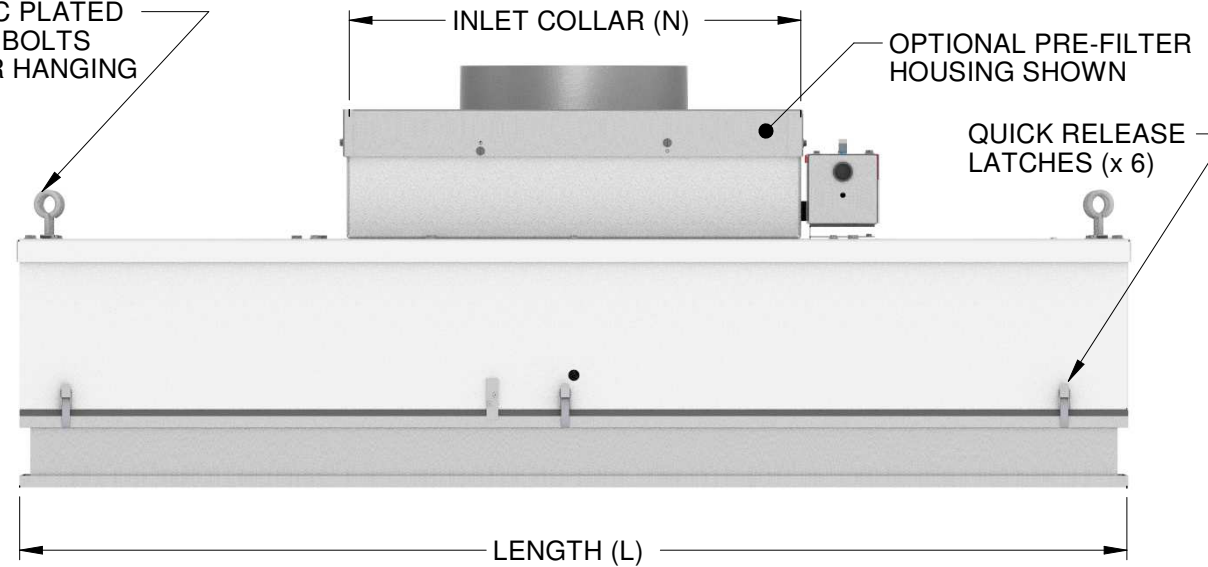
- WALL MOUNTED SPEED CONTROL (SEE KROWN-CS SUBMITTAL 274235)
- POWER CORD (8ft 115V or 6ft 277V)
- MERV 8 PRE-FILTER (NON-DUCTED UNITS ONLY)
- MERV 8 PRE-FILTER WITH SIDE ACCESS HOUSING (DUCTED UNITS ONLY)
- WASHABLE PRE-FILTER WITH SIDE ACCESS HOUSING (DUCTED UNITS ONLY)
- NETC12 - 12 FOOT RJ45 NETWORKING CABLE FOR BACnet DAISY CHAIN
- NETC35 - 35 FOOT RJ45 NETWORKING CABLE FOR BACnet DAISY CHAIN

ZINC PLATED EYEBOLTS FOR HANGING

INLET COLLAR (N)

OPTIONAL PRE-FILTER HOUSING SHOWN

QUICK RELEASE LATCHES (x 6)

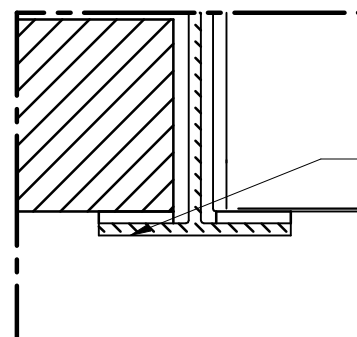


LED INDICATOR

EXPANDED METAL SCREEN

| WHEEL TYPE | NOMINAL UNIT SIZE | WIDTH (W) | LENGTH (L) | HEIGHT* (H) | INLET COLAR (N) | FILTER AREA | MAX AMPS FAN (PSC)<br>(115/240/277) | MAX AMPS FAN (EC)<br>(115/240/277) |
|------------|-------------------|-----------|------------|-------------|-----------------|-------------|-------------------------------------|------------------------------------|
| FC         | 24x24             | 23.625    | 23.625     | 11.000      | 16.000          | 3.3         | 4.0/1.6/1.6                         | 3.2/1.8/1.6                        |
|            | 24x36             | 23.625    | 35.625     | 11.000      | 20.000          | 5.1         | 4.0/1.6/1.6                         | 4.8/2.7/2.4                        |
|            | 24x48             | 23.625    | 47.625     | 11.000      | 20.000          | 7.0         | 4.0/1.6/1.6                         | 4.5/2.6/2.5                        |
| BC         | 24x36             | 23.625    | 35.625     | 11.000      | 20.000          | 5.1         | 4.0/1.6/1.6                         | 2.3/1.5/1.5                        |
|            | 24x48             | 23.625    | 47.625     | 11.000      | 20.000          | 7.0         | 4.0/1.6/1.6                         | 2.9/1.6/1.6                        |

.EDK OPTION WITH PSC MOTOR ADDS 6" TALL LED BOX



FOR 15/16" (23), 1-1/2" (38)  
CLEANROOM TEE  
INSTALLED BY OTHERS



PROJECT:

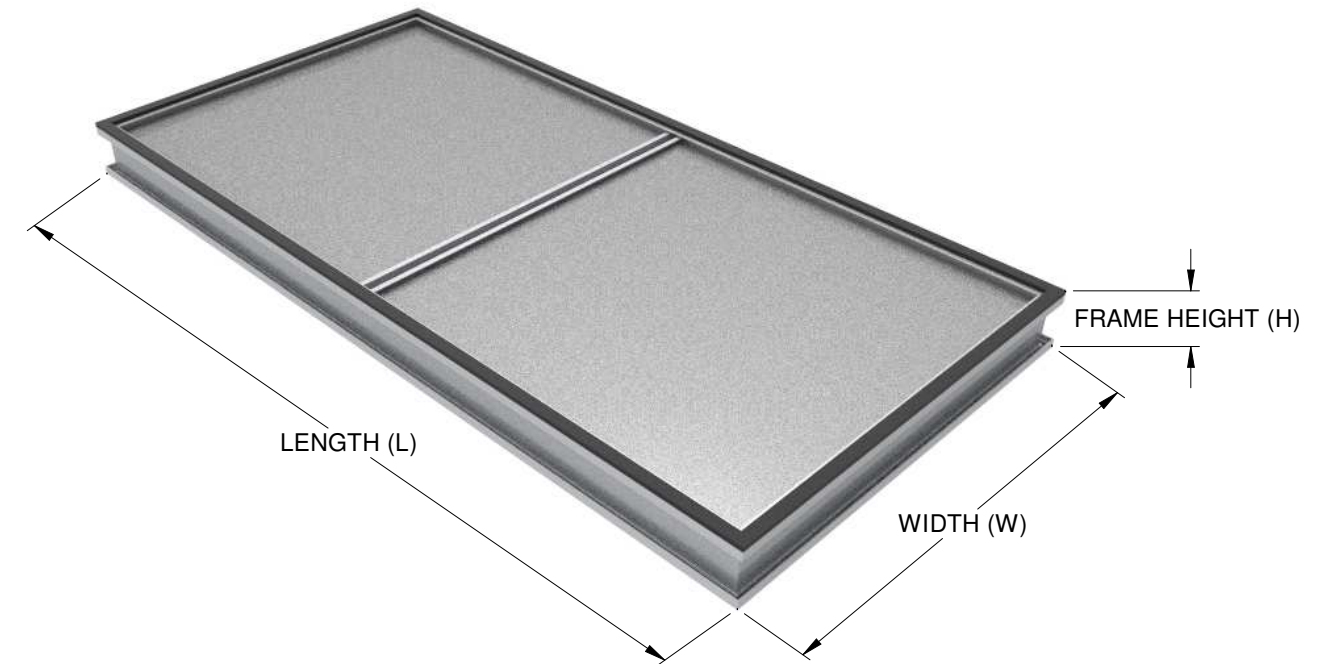
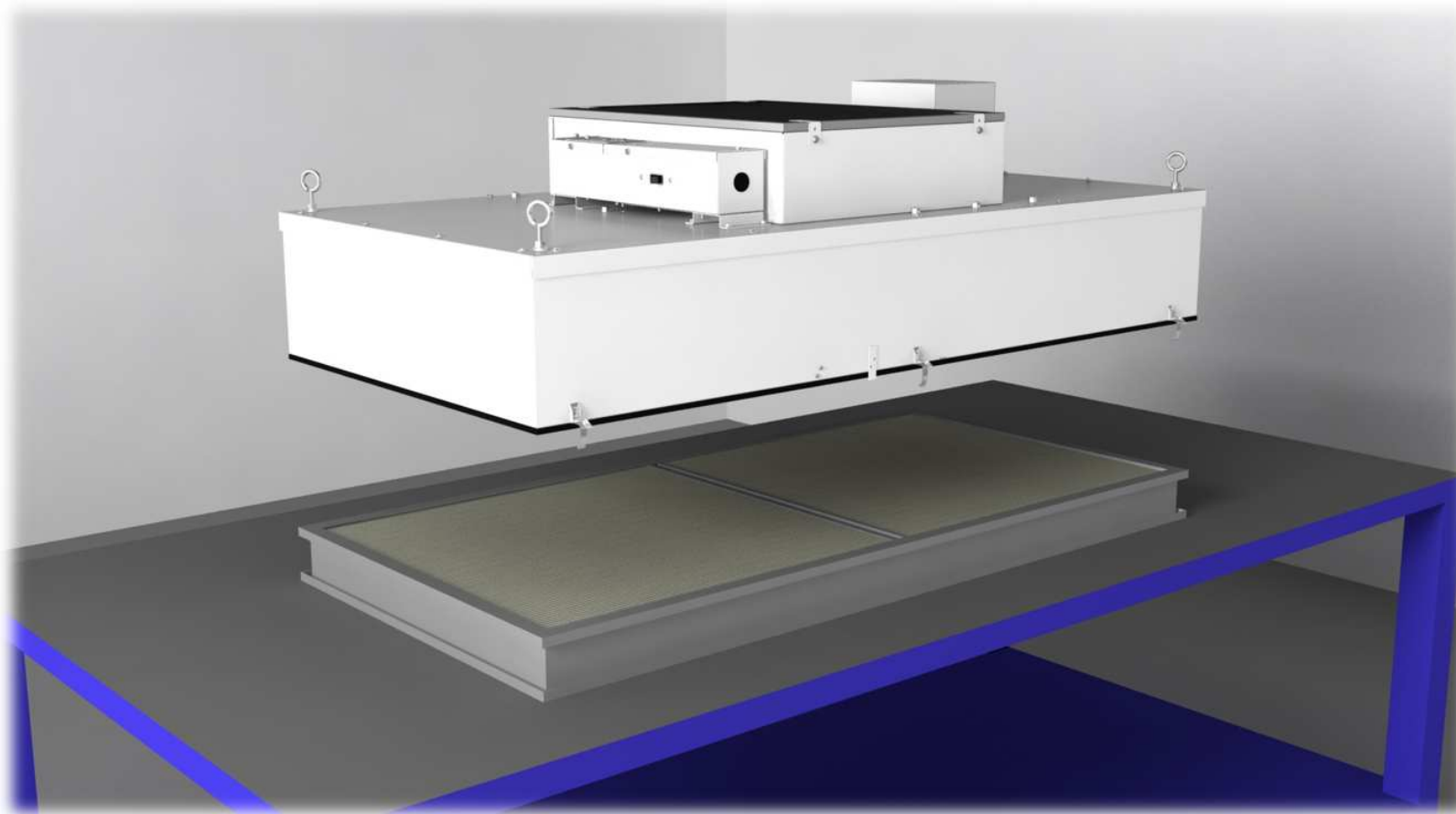
274233

Revision: 0

03-22-2022

# KROWN

## FAN FILTER UNIT WITH BENCHTOP REPLACEABLE FILTER FILTER DETAILS



### NOTES

- FILTER PLEATS RUN PARALLEL TO THE WIDTH (W) DIMENSION
- DIMENSIONS L & W TOLERANCES  $\pm \frac{1}{16}$ "
- FILTERS COME WITH GASKETED UPSTREAM FLANGE AND CENTER MULLION WITH STATIC PRESSURE PORTS
- EXPANDED PAINTED WHITE SCREEN ON THE DOWNSTREAM SIDE
- FRAME DETAILS:
  - MATERIAL: ANODIZED EXTRUDED ALUMINUM
  - THICKNESS:  $\frac{1}{16}$ " (MINIMUM)
- HEPA FILTERS EFFICIENCY AND LEAK SCAN TESTED TO IEST RP CC001 TYPE J
- ULPA FILTERS EFFICIENCY AND LEAK SCAN TESTED TO IEST RP CC001 TYPE F
- FILTER PACKAGED SEPERATELY FROM DIFFUSER FOR JOB SITE INSTALLATION BY OTHERS

### ACTUAL FILTER SIZE

| WIDTH (W) | LENGTH (L) | HEIGHT (H) |
|-----------|------------|------------|
| 23.625    | 23.625     | 3.06       |
| 23.625    | 35.625     | 3.06       |
| 23.625    | 47.625     | 3.06       |



PROJECT:

VISIT KEYSTONE CLEAN AIR SOLUTIONS WEBSITE FOR FILTER INSTALLATION GUIDE

274233

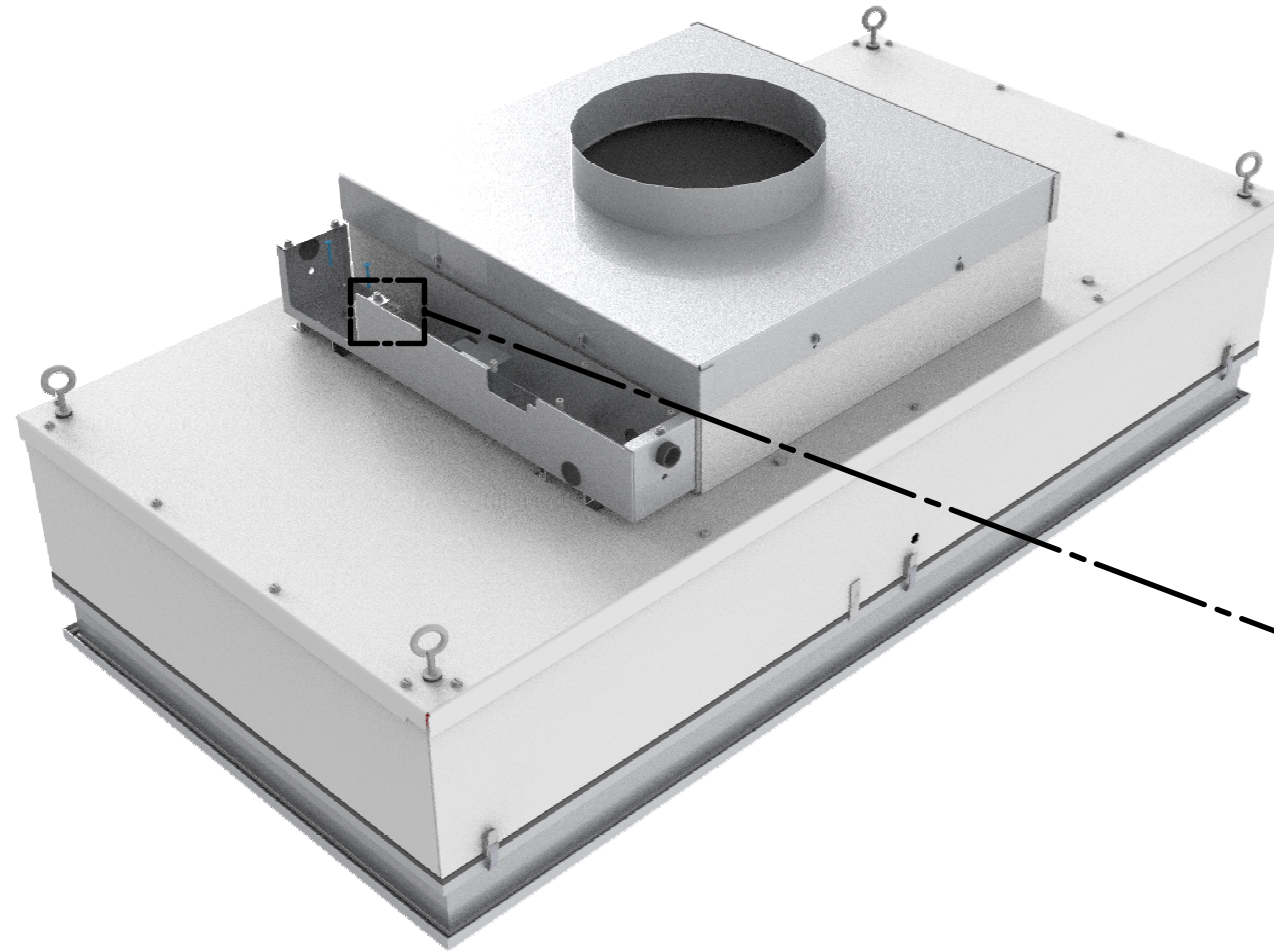
Revision: 0

03-22-2022



# KROWN

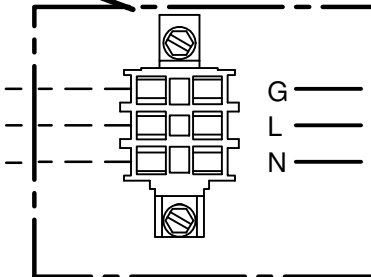
## FAN FILTER UNIT WITH BENCHTOP REPLACEABLE FILTER FIELD CONNECTION DETAILS



— PRE-WIRED FACTORY CONNECTION  
- - - FIELD CONNECTION  
G GROUND  
N NEUTRAL  
L LINE CONNECTION

FAN  
HIGH VOLTAGE  
FIELD CONNECTIONS

G  
L  
N



PROJECT:

274233

Revision: 0

03-22-2022

INSTALLATION WORK AND ELECTRICAL WIRING MUST BE COMPLETED BY A CERTIFIED ELECTRICIAN AND/OR QUALIFIED PERSON(S) IN ACCORDANCE WITH APPLICABLE ELECTRICAL CODES AND STANDARDS